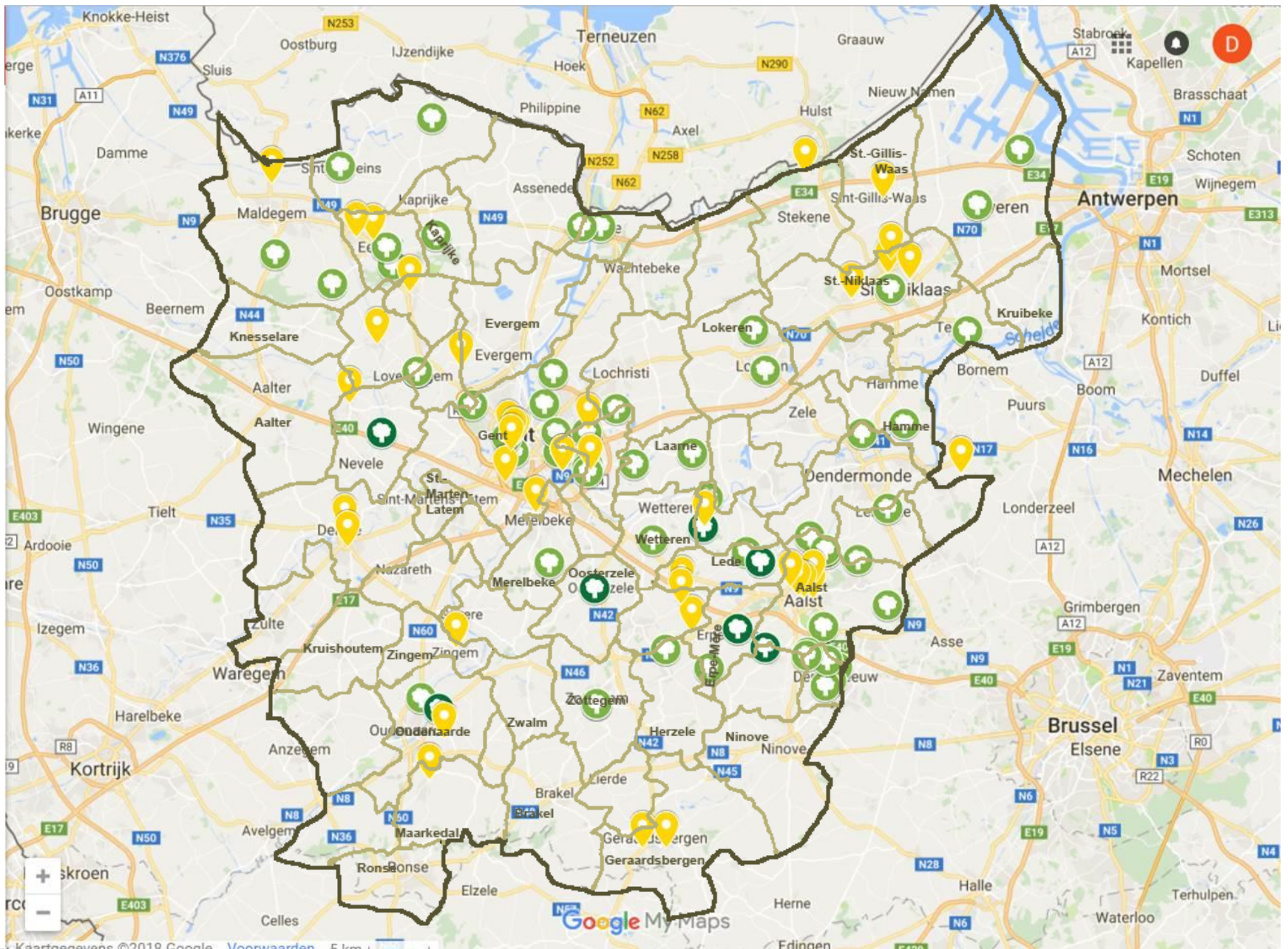




provincie  
Oost-Vlaanderen



# Typical playground in Flanders



# We need more of this



Foto: Willy Leufgen

# Benefits for children

## and teachers

- Children with ADHD can concentrate better if they are active in nature.
- Children with a view of and contact with nature score higher on tests of concentration and self-discipline. The greener the environment, the better the scores.
- Exposure to natural environments improves the intellectual development of children by improving their awareness, reasoning and perception.
- Early experiences with nature stimulate the development of imagination and feelings of wonder. Wondering is an important motivation for lifelong learning.
- A natural environment stimulates the interaction between children and they have more positive feelings about each other. The impact of tensions in the lives of children is reduced and they can cope better with adversity.

# Benefits for children

## and teachers

- Playing in nature is important for the development of independence in children.
- Their play is more diverse, more imaginative and creative, which encourages their language and skills to work together.
- Children who regularly play in a natural environment have better motor skills (coordination, balance and agility) and they are less often ill.
- Bullying behavior reduces or even disappears completely.
- Nature helps children develop perception and creativity and gives them a sense of calm.
- Calmer in the classroom after playing time
- Opportunities for nature education
- Observe, discover patterns, sharper sensory skills

# Benefits for school

- Strengthen cooperation in the team
- Widen the social network of the school
- Parent involvement
- Neighborhood associations
- Optimize space
- Opportunities for experiential education and anchoring of nature and environmental education in the pedagogical project
- Profiling as a green, sustainable and healthy school

# Environmental benefits

- Increasing biodiversity
- CO2 reduction
  - 229g / year / m<sup>2</sup> grass
  - 24kg / year / adult tree
- Better air quality
- Shadow and cooling
- Tempering heat island effect
- Favorable effect on water management



# Movement



# Creativity and fantasy



# Solution-oriented thinking



# Social skills



# Social skills / Wondering



# Motoric development



# Experimental learning



# Discover nature





# Explore and shift boundaries



# Civic sense and commitment



# Health



**What does a  
school need  
to get started?**







# Enthusiasm



# Workgroup







Vision



# Helping hands

# Klimaatgezonde speelplaatsen

## Climate Healthy Playgrounds



[www.oost-vlaanderen.be/klimaatgezondespeelplaatsen](http://www.oost-vlaanderen.be/klimaatgezondespeelplaatsen)

# Climate Healthy Playgrounds

- The Province of East Flanders and MOS guide schools in a 2-year trajectory to a green, adventurous, educational and climate-friendly playground in 20 steps
- For each of the 20 steps we offer support in 3 different ways:
  - inspirational documents,
  - tailor-made guidance
  - workshops

From this ...



To this ...



Foto: [springzaad.be](http://springzaad.be)

# In 20 steps



# The first 10 steps

1. Register as a MOS school
2. Get informed and inspired
  1. Part 1: 50 shades of green
  2. Part 2: inspiring field visit
3. Assemble a workgroup
4. Why do we do it? Develop a vision
5. Involve the entire school team
6. Communicate the vision
7. Identify possible helping hands
8. Participation of pupils
9. Parent participation
10. Broad communication on the project

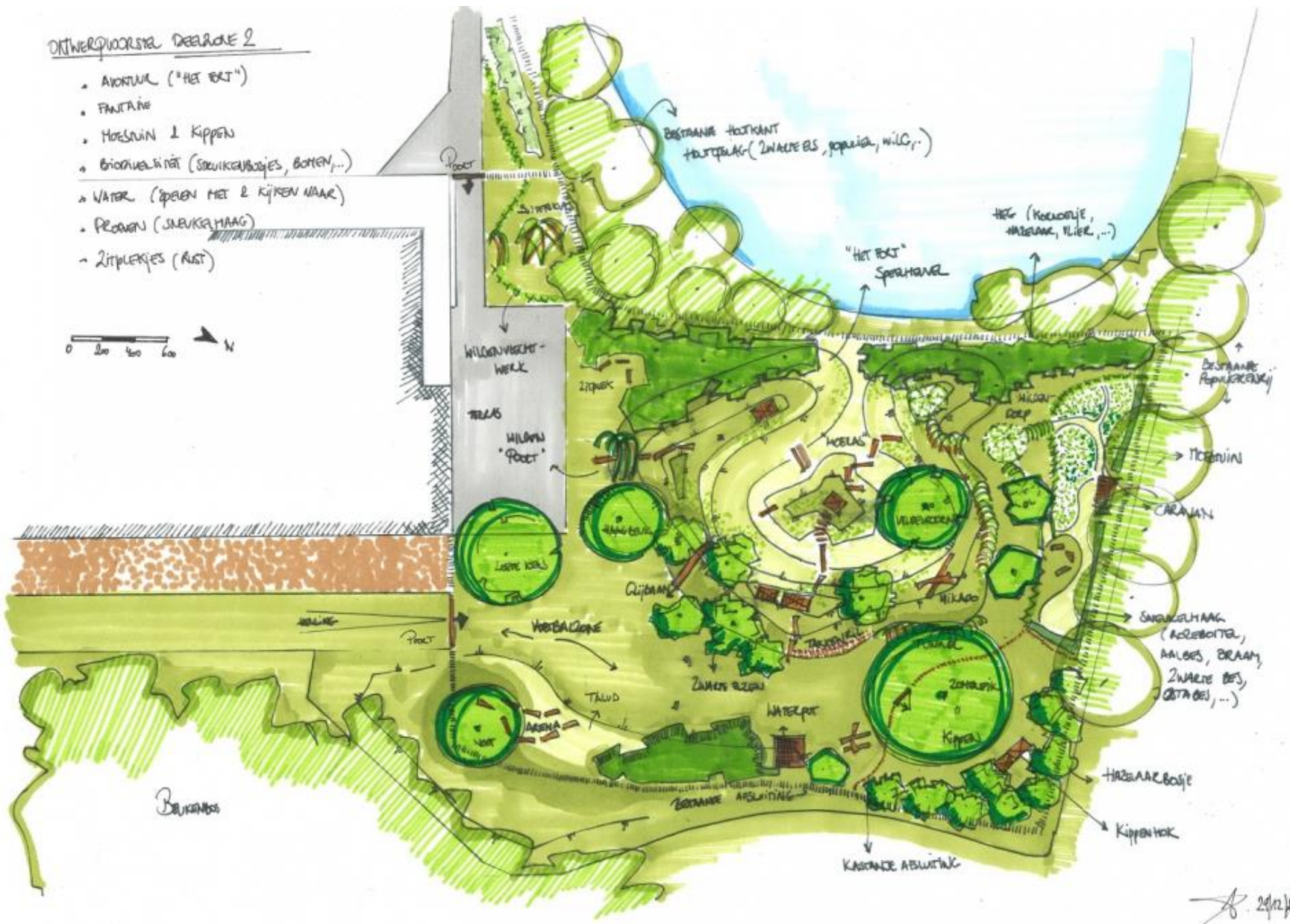


# The next 20 steps

11. Link to the educational program
12. Create draft plan
  - Part 1: bringing together ideas
  - Part 2: testing the practice on the ground
13. Planning of execution of the project
  - Part 1: phasing and planning work
  - Part 2: organization workdays
14. Financial plan
15. Addressing partners
16. Implementation phase
17. Opening ceremony
18. Evaluation
19. Maintenance
20. Educational use of the playground

ONTWERPWOORSTEL DEELBLAD 2

- AVONTUUR ("HET ERT")
- FONTAINE
- HOESWIJN & KIPPEN
- BIOOMVELIJDIGHEID (SNOEKELHAAGBOESJE, BOTTEN,...)
- WATER (SPELEN MET & KIJFEN NAAR)
- PROOVEN (JNEUKELHAAG)
- ZITPLEKJES (RUST)



*[Signature]* 2/12/2014



[visualisatie "speelfort" sint-jozef kinderopvang | wetteren]

# The next 20 steps

11. Link to the educational program
12. Create draft plan
  - Part 1: bringing together ideas
  - Part 2: testing the practice on the ground
13. Planning of execution of the project
  - Part 1: phasing and planning work
  - Part 2: organization workdays
14. Financial plan
15. Addressing partners
16. Implementation phase
17. Opening ceremony
18. Evaluation
19. Maintenance
20. Educational use of the playground

# Support



# Inspirational documents and – cases for DIY'ers

## Methodiek visie-ontwikkeling

Duur 1 uur

- Terugblik op oefening sessie 1
- strategische en operationele doelstellingen: METHODIEK ALFADOELEN
  - Iedereen kiest een foto (caldidoscopio-kaarten) die voor zichzelf het waarom van het vergroeningsstraject symboliseert.
  - Per 3: bespreken foto's aan elkaar.
  - Op een blad met de letters van het alfabet, per letter een woord schrijven die in relatie staat met het waarom van vergroenen.
  - De 5 belangrijkste woorden voor vergroenen en hiermee een zin schrijven die (een doel binnen) je visie verwoordt  
 Inspiratie visietekst De Kleine Prins, Lede
  - We overlopen de zinnen van elke groep.
  - Samen kunnen deze de visie bepalen en doelen inhouden
  - De directie kan dit samen met de werkgroep ruimer uitschrijven

- Hoe communiceren?
  - Brainstorm
    - Hoe? Website, folder, nieuwsbrief,...
    - Wie communiceren?
    - Aan wie communiceren je?

EIGENAAR: \_\_\_\_\_  
 TIMING: \_\_\_\_\_

provincie  
**Oost-Vlaanderen**  
 www.oost-vlaanderen.be/klimaatgezondspelplaatsen



Zoek gerechten, mode enzovoort.



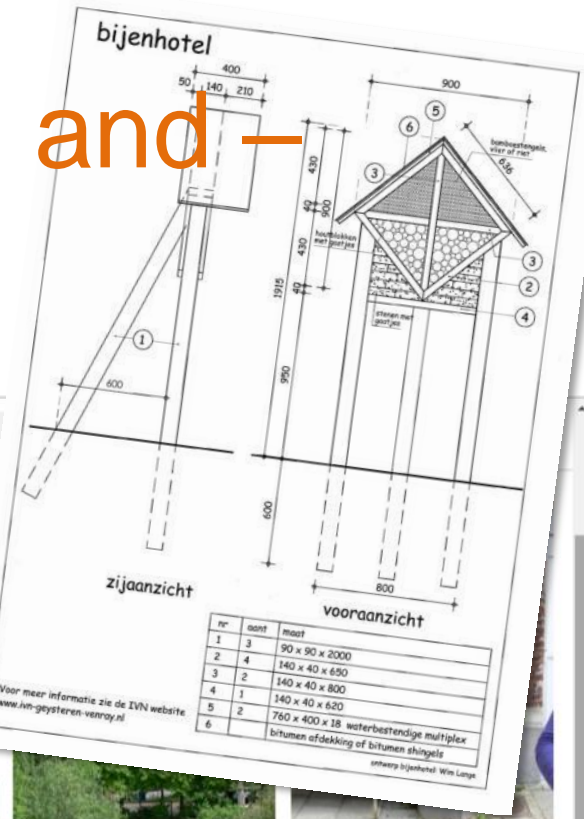
bringing water



Kleuters verven letters op bevroren bankjes met warm water en een kwast, kleuteridee.nl



Binnenblijven bij regenweer? De oplossing is een 'bottenrek'.



Deze regenont spaart veel water en neemt weinig plaats in (Prins Dries, Antwerpen)



Kunst, fontein of speeltoestel?



Pomp met houten speelgoot op een speelplaats in Berlijn



# Tailor-made guidance

- Dienst NME Oost-Vlaanderen
  - Tom Gorré
- MOSbegeleiders
  - Sandra Vandevelde
  - Wouter De Tandt
  - Mike Stoens
- Support by experts

# Support by experts

- Fris in 't landschap
- Peter Vosters
- Katrijn Gijssels
- Annelies Sevenant
- Mier vzw
- Goodplanet
- VCOV
- Springzaad
- Gie Deboutte
- Voedselbos
- Regionaal Landschap Meetjesland
- Regionaal Landschap Vlaamse Ardennen
- Regionaal Landschap Schelde-Durme
- De Helix
- Nicky Borremans
- Groep Intro
- Pro Natura
- Kind en Samenleving
- David Crabbé
- Velt
- Diëgo Van De Keere
- MOSbegeleiders
- ....



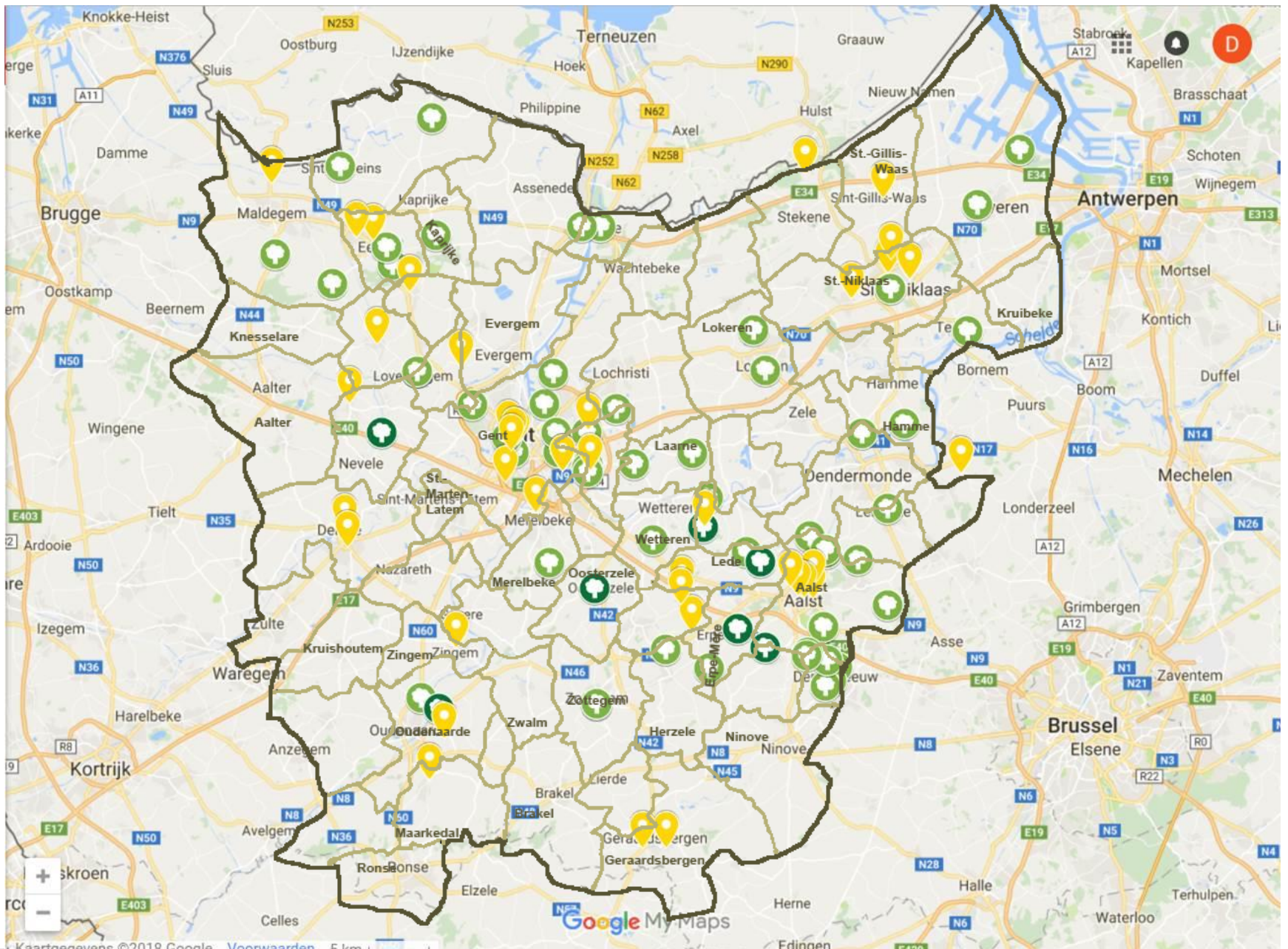
# Workshops

- 50 shades of green
- Playground vision
- Participation and support of the team
- Draft plan
- Risk analysis
- Educational use of the outdoor space
- Vegetable garden, square meter garden, permaculture
- Willow constructions
- Wickerwork
- Insect hotel / beast tower
- Outdoor kitchen
- Waterland
- Waterwall
- Barefoot path
- Well-being and health
- Animals at school
- Make your playground accessible to everyone
- Open your playground for the neighborhood
- Play and climbing trees
- Creative with tiles / debris / mosaic
- Edible plants and fruit
- Green walls
- Fire
- Compost
- Senses ...

# Workshops



[Filmpje wilgenhut](#)



# Collaboration with municipalities

- Collaboration with local councils that want to make use of adventurous, green and climate-healthy playgrounds at all schools on their territory
  - Aalst
  - Denderleeuw
  - Destelbergen
  - Beveren
  - Sint-Niklaas
  - ...

# Contact us:

- **Project information**
  - Tom Gorré  
0498/17 77 20 - [tom.gorre@oost-vlaanderen.be](mailto:tom.gorre@oost-vlaanderen.be)
- **MOS Elementary school**
  - Wouter De Tandt  
055 23 71 44 - [wouter.de.tandt@oost-vlaanderen.be](mailto:wouter.de.tandt@oost-vlaanderen.be)
  - Sandra Vandevelde  
055 23 71 42 - [sandra.vandevelde@oost-vlaanderen.be](mailto:sandra.vandevelde@oost-vlaanderen.be)
- **MOS Secondary school**
  - Mike Stoens  
055 23 71 43 - [mike.stoens@oost-vlaanderen.be](mailto:mike.stoens@oost-vlaanderen.be)

# Klimaatgezonde speelplaatsen

## Climate Healthy Playgrounds



[www.oost-vlaanderen.be/klimaatgezondespeelplaatsen](http://www.oost-vlaanderen.be/klimaatgezondespeelplaatsen)

# Gras Project

- GRAS = Green Adventurous Playground
- For schools in Ghent
- A GRAS school looks different every time but there is always:
  - variation in height (high and low)
  - variation in play zones (quiet versus intensive)
  - variation in substrates (hardened versus unhardened)
  - planting for a green look and biodiversity

# Gras Project

- A GRAS challenges children to exercise more, offers **more variation in play** and appeals to a wider group of children.
- It ensures that **every child can find a place**, even the more quiet children.
- There is **more to experience** on a GRAS. This means less boredom, aggressive behavior and less bullying behavior.
- A GRAS offers many opportunities for **education**.



# Basiselementen: variatie in beplanting (De Oogappel)



# Basiselementen: variatie in ondergronden (De Regenboog)



# Basiselementen: variatie in reliëf (SJC Visitatie)



voor



na



na

# Gras Project support includes

- an inspiring presentation of the GRAS project (about one and a half hour, target group: management, teachers and other team members, and parent groups)
- learning path counseling in different phases: forming a vision, organizing participation, drawing up a draftplan, ....
- info point for all questions
- possibility to apply for a subsidy amount of 3000 euros

# ... this afternoon

## 4 school playgrounds

- De Regenboog
- De Toverberg
- De Wonderfluit
- De Oogappel

